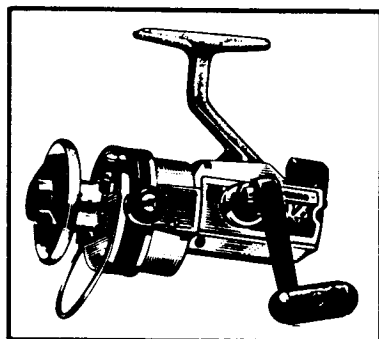


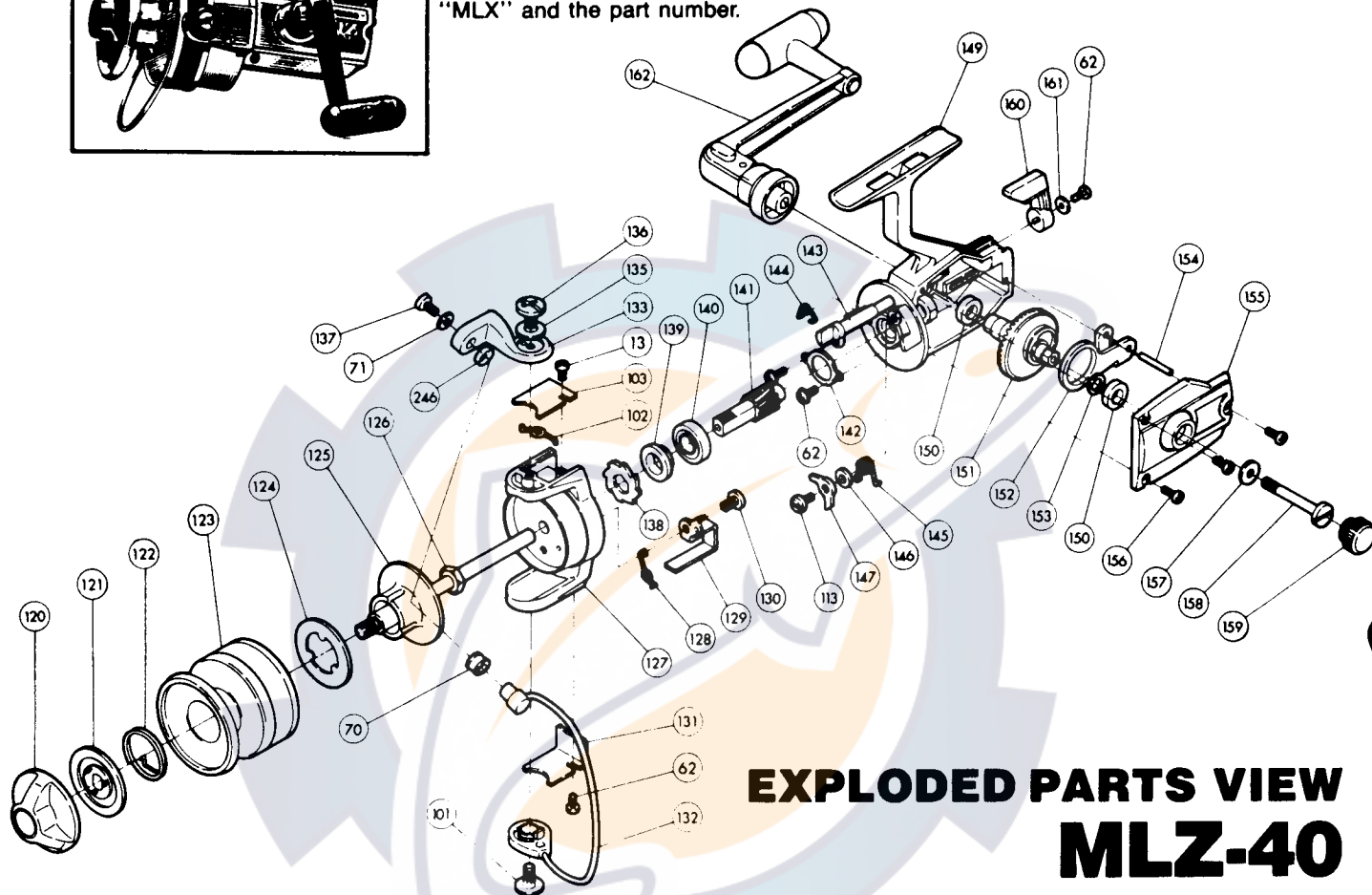
## 1987 REPAIR MANUAL SHEET MLZ-40

Shimano American Corporation, One Shimano Dr.  
Irvine, CA 92718



**TO ORDER:**

This reel belongs to the "MLX, MLZ" series.  
Please order parts using the abbreviation  
"MLX" and the part number.



### EXPLODED PARTS VIEW MLZ-40

### PARTS LIST

**PART# DESCRIPTION**

- 13 Cover screw
- 62 Cover screw
- 70 Roller line guide
- 71 Lock washer
- 101 Bail wire screw
- 102 Bail spring
- 103 Bail spring cover
- 113 Anti reverse dog screw
- 120 Drag adjusting knob
- 121 Drag disk
- 122 Click spring
- 123 Spool shell
- 124 Base drag disk
- 125 Spindle
- 126 Rotor nut
- 127 Rotor
- 128 Trip lever spring

**PART# DESCRIPTION**

- 129 Trip lever
- 130 Trip lever screw
- 131 Trip lever cover
- 132 Bail wire
- 133 Bail mount
- 135 Bail mount washer (opt.)
- 136 Bail mount screw
- 137 Bail wire screw
- 138 Anti reverse ratchet
- 139 Anti reverse ratchet spacer
- 140 Ball bearing
- 141 Pinion gear
- 142 Bearing retainer
- 143 Anti reverse shaft
- 144 Anti reverse shaft spring
- 145 Anti reverse dog spring
- 146 Anti reverse dog spacer

**PART# DESCRIPTION**

- 147 Anti reverse dog
- 149 Housing
- 150 Drive gear bushing
- 151 Drive gear
- 152 Oscillation guide
- 153 Drive gear spacer
- 154 Oscillation guide pin
- 155 Side plate
- 156 Side plate screw
- 157 Handle screw lock washer
- 158 Handle screw
- 159 Dust cover
- 160 Anti reverse lever
- 161 Anti reverse lever lock wash
- 162 Handle
- 246 Line guide cover